

FILATI NO. 61

FILATI

Design 30

PULLOVER



PULLOVER

Size 36 – 40 (42 – 46, 48/50) Instructions are given for first size. Figures in parenthesis refer to larger sizes. When only one figure is given, it applies to all sizes.

Materials: 200 (250, 300) g of Lana Grossa **Per Fortuna** (74% organic cotton, 26% polyamide; 190 m/50 g) in White (**col 9**) and 100 (150, 150) g each in Orange (**col 11**) and Pink (**col 3**). Size 3.5 and 4.5 mm needles; size 3.5 mm circular needle, 60 cm long.

Selvage stitches: On every row: Sl first st kwise, k last st.

Rib patt: K1, p1.

Half-brioche rib: Work according to chart. Numbers at right edge of chart indicate RS rows, numbers at left edge of chart indicate WS rows. Work to patt rep, work 2 sts between arrows for patt rep, work to end of chart. Work rows 1 – 4 once, then rep rows 3 and 4. Note: 1 stitch and 1 yo are treated as 1 stitch.

Note: When changing colors, knit all sts on first RS row worked with new color. Resume patt on foll WS row.

Gauge: 21 sts and 32 rows = 10 x 10 cm in half-brioche rib on size 4.5 mm needles.

Back: With size 3.5 mm needles and Pink cast on 129 (137, 145) sts. Next row (WS): Selvage st, * k1, p1; rep from * to last 2 sts, k1, selvage st. Break Pink, join Orange, knit next RS row [see note]. Work in rib patt as set by first WS row for 11 rows and piece meas 4 cm from cast-on. Change to size 4.5 mm needles. Work chart for 52 rows = 16 cm. Break Orange, join White, knit next RS row [see note]. Work chart for 63 rows = 20 cm. Break White, join Pink, knit next RS row [see note], place marker in first and last st on last row to indicate beg of armholes. Work chart for 51 (55, 59) rows and piece meas 16 (17, 18) cm from armhole markers. Shape neck: Next row (RS): Bind off center 41 sts. Working each side separately, bind off 3 sts at each neck edge 1 time, 2 sts 1 time, 1 st 2 times and when piece meas 4 cm from beg of neck shaping, bind off rem 37 (41, 45) sts for each shoulder.

Front: Work same as back until 41 (45, 49) rows = 13 (14, 15) cm have been worked from armhole markers. Shape neck: Next row (RS): Bind off center 37 sts. Working each side separately, bind off 3 sts at each neck edge 1 time, 2 sts 2 times, 1 st 2 times and when same length as back to shoulders, bind off rem 37 (41, 45) sts for each shoulder.

Sleeves: With size 3.5 mm needles and Pink cast on 49 (53, 57) sts. Next row (WS): Selvage st, * k1, p1; rep from * to last 2 sts, k1, selvage st. Break Pink, join White, knit next RS row [see note]. Work in rib patt as set by first WS row for 11 rows and piece meas 4 cm from cast-on, increasing 16 sts evenly across last WS row = 65 (69, 73) sts. Change to size 4.5 mm needles. Work chart and shape sleeve as foll: Inc 1 st at each end of

9th row, then every 10th row 10 times = 87 (91, 95) sts. Work increased sts into patt. Work even until chart has been worked for a total of 122 rows = 38 cm. Loosely bind off all sts in patt.

Finishing: Pin pieces to measurements and block. Sew shoulder seams. **Neckband:** With size 3.5 mm circular needle and Pink, pick up and k 160 sts evenly around neck edge. Place beg of rnd marker and join for working in rnds. Matching half-brioche rib as much as possible, work rib patt in rnds for 7 rnds = 2 cm. Bind off all sts in rib. Sew on sleeves between markers. Sew side and sleeve seams.

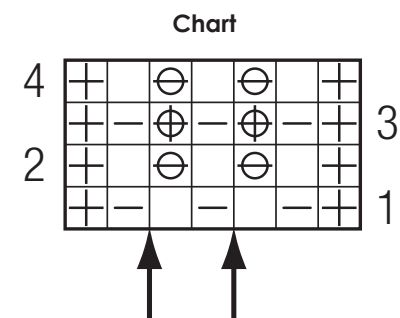
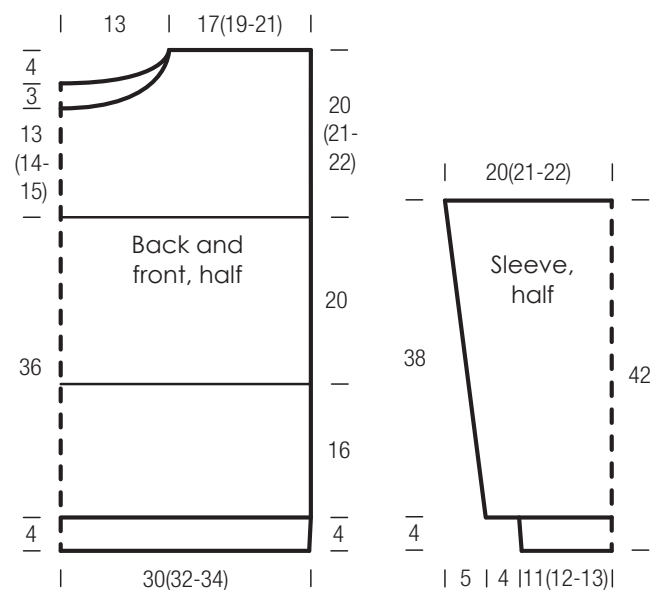


Chart key:

- ⊕ = selvage st
- ⊖ = k1
- ⊖ = p1
- ⊕ = make a yo, then sl next st pwise
- ⊖ = ktog slipped st with its yo



PULLOVER

GAUGE SWATCH

Before you begin knitting...

...make a gauge swatch. Use the recommended needles, yarns and pattern stitch for your gauge swatch. It should measure approx. 12 cm x 12 cm. Cast on and bind off rows, as well as selvage stitches should not be included in the measurement. Pin your swatch and block it as you would the finished pieces of the garment. Count stitches and rows over 10 cm. If your gauge swatch is too small, switch to larger needles. If your gauge swatch is too big, switch to smaller needles.

ABBREVIATIONS

beg = begin(ning) · **ch** = chain · **cont** = continue · **dec** = decreas(e)(ing) · **inc** = increas(e)(ing) · **k** = knit · **kwise** = as if to knit · **meas** = measures · **M1L** = lift strand between sts from front to back and knit this strand through the back loop · **M1R** = lift strand between sts from the back and knit this strand through the front loop · **patt** = pattern · **pm** = place marker · **p** = purl · **pwise** = as if to purl · **rem** = remain(ing) · **rep** = repeat(s) · **rev St st** = reverse stockinette stitch · **rnd(s)** = round(s) · **RS** = right side · **sc** = single crochet · **skp** = slip 1 stitch as if to knit, knit 1 stitch, pass slipped stitch over knitted stitch · **sk2p** = slip 1 stitch as if to knit, knit 2 together, pass slipped stitch over knitted stitch · **s2kp** = slip 2 stitches as if to knit, k 1 stitch, pass slipped stitches over knitted stitch · **sl** = slip · **st(s)** = stitch(es) · **St st** = stockinette stitch · **tbl** = through the back loop · **tog** = together · **wyib** = with yarn in back of work · **wyif** = with yarn in front of work · **WS** = wrong side · **yo(s)** = yarn over(s)