



© Lana Grossa GmbH

Design 35 – Classici 25

**CROCHET PULLOVER
CASHMERE 16 FINE**

CROCHET PULLOVER · CASHMERE 16 FINE

Design 35 – Classici 25



Size 36/38 (40/42, 44)

Instructions are given for first size. Figures in parenthesis refer to larger sizes. When only one figure is given, it applies to all sizes.

Materials: 550 (600, 650) g of Lana Grossa **Cashmere 16 Fine** (80% Merino wool, 10% cashmere, 10% polyamide; 320 m/50 g) in Lime (col 42). Size 3 and 3.5 mm crochet hook.

Half double crochet [hdc] in rows: Row 1: Ch 1 (does not count as hdc), 1 hdc in each st and/or sp. Row 2: Ch 1, hdc blo in each st. Work rows 1 – 2 once, then rep row 2.

Main patt: Multiple of 2 + 1. Work according to chart 1. Numbers at left and right edge of chart indicate rows. Work rows 1 – 7 once, then rep rows 4 – 7.

Front neck shaping: Work according to chart 2. Numbers at left and right edge of chart indicate rows. For size 36/38, front neck shaping begins on row 105 as shown on chart. For size 40/42, begin front neck shaping 8 rows later, that is on row 113, then work neck shaping same as for size 36/38. For size 44, begin front neck shaping 18 rows later, that is on row 123, then work neck shaping same as for size 36/38.

Gauge: 24 sts and 21 rows = 10 x 10 cm in main patt chart 1 with size 3.5 mm hook.

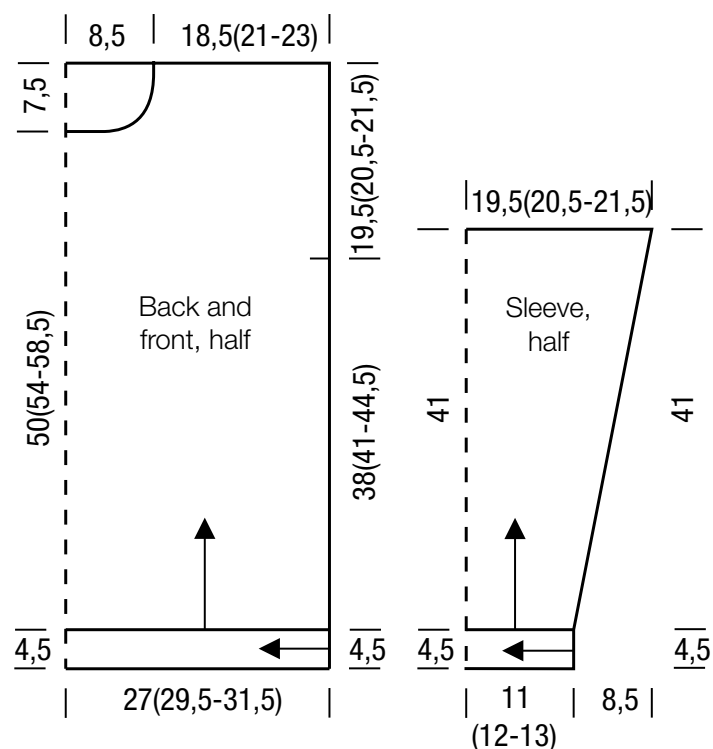
Back: Work bottom band first as foll: With size 3 mm hook, ch 15 + ch 1. Work hdc in rows for 131 (141, 151) rows. Fasten off. With size 3.5 mm hook, work row 1 of chart 1 in row ends of one long side edge of bottom band = 131 (141, 151) sts. Cont until main patt has been worked for 38 (41, 44.5) cm. Place marker at each edge to indicate beg of armholes. Cont in main patt until piece meas 19.5 (20.5, 21.5) cm from armhole markers. Fasten off.

Front: Work same as back until main patt has been worked for 104 (112, 122) rows = 50 (54, 58.5) cm. Leaving center 25 sts unworked, foll chart 2 for neck shaping and when main patt has been worked for 57.5 (61.5, 66) cm, fasten off.

Sleeves: Work cuff first as foll: With size 3 mm hook, ch 15 + ch 1. Work hdc in rows for 53 (57, 61) rows. Fasten off. With

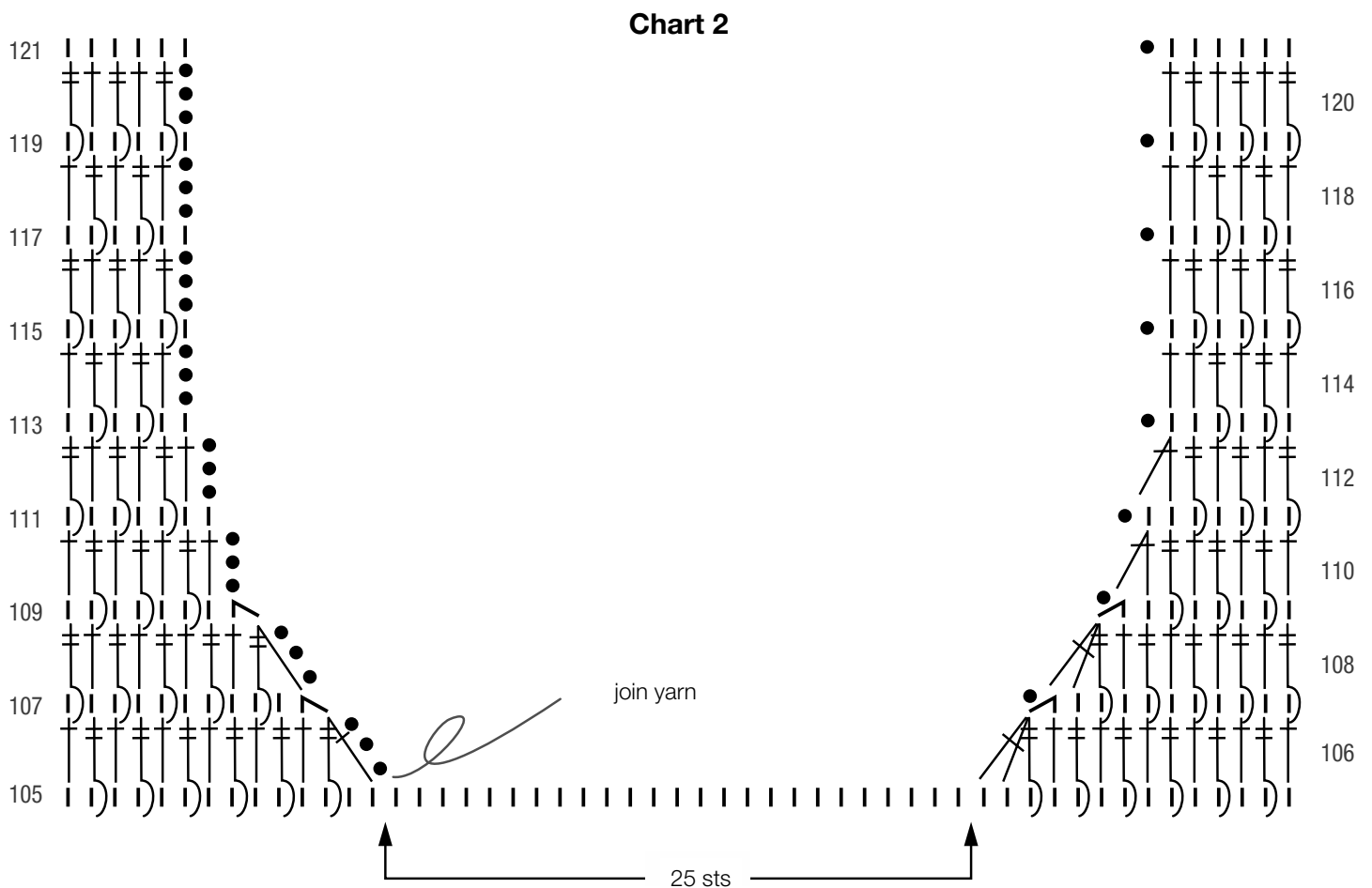
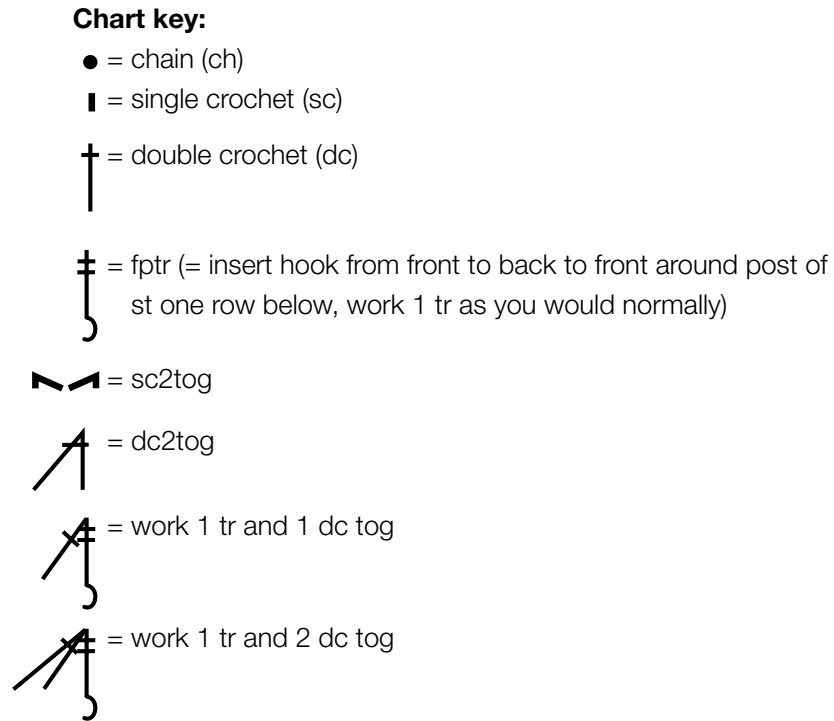
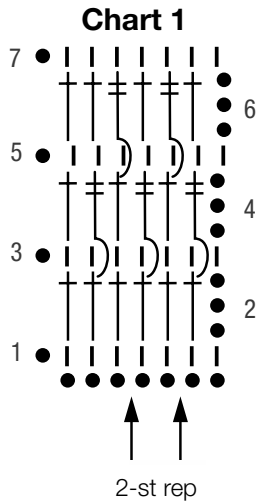
size 3.5 mm hook, work row 1 of chart 1 in row ends of one long side edge of cuff = 53 (57, 61) sts. Cont in main patt and shape sleeve as foll: Inc 1 st at each end of 5th row, then every 4th row 19 times = 93 (97, 101) sts. Work even until main patt has been worked for 41 cm. Fasten off.

Finishing: Pin pieces to measurements and block. Join shoulders with sl st. **Neckband:** With size 3 mm hook, work 1 rnd of 112 sc around neck edge, sl st in first sc to join. Next, ch 9, hdc in 2nd ch from hook and rem 7 ch. * Sl st in each of next 2 sc, turn work, hdc blo to end of row, turn work, ch 1, hdc in 2nd ch from hook and rem 7 ch. Rep from * until neckband has been worked around entire neck edge. Fasten off. Sew short edges of neckband tog. Sew on sleeves between markers. Sew side and sleeve seams.



CROCHET PULLOVER · CASHMERE 16 FINE

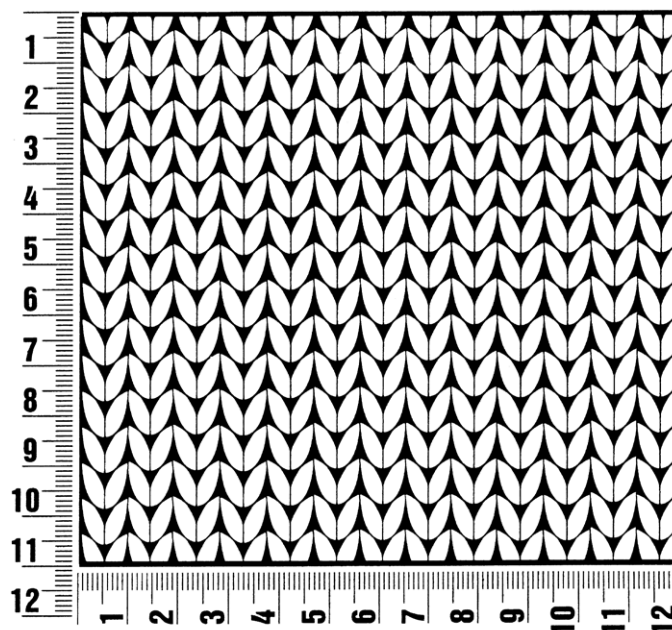
Design 35 – Classici 25



Gauge Swatch

Before you begin ...

...make a gauge swatch. Use the recommended needles, yarns and pattern stitch for your gauge swatch. It should measure approx. 12 cm x 12 cm. Cast-on and bind-off rows, as well as selvage stitches should not be included in the measurement. Pin your swatch and block it as you would the finished pieces of the garment. Count stitches and rows over 10 cm. If your gauge swatch is too small, switch to larger needles. If your gauge swatch is too big, switch to smaller needles.



Abbreviations

beg = begin(ning) · **ch** = chain · **cont** = continue · **dec** = decompas(e)(ing) · **inc** = increas(e)(ing) · **k** = knit · **kwise** = as if to knit
meas = measures · **M1L** = lift strand between sts from front to back and knit this strand through the back loop · **M1R** = lift strand between sts from the back and knit this strand through the front loop · **patt** = pattern · **pm** = place marker · **p** = purl
pwise = as if to purl · **rem** = remain(ing) · **rep** = repeat(s) · **rev St st** = reverse stockinette stitch · **rnd(s)** = round(s) · **RS** = right side · **sc** = single crochet · **skp** = slip 1 stitch as if to knit, knit 1 stitch, pass slipped stitch over knitted stitch · **sk2p** = slip 1 stitch as if to knit, knit 2 together, pass slipped stitch over knitted stitch · **s2kp** = slip 2 stitches as if to knit, k 1 stitch, pass slipped stitches over knitted stitch · **sl** = slip · **st(s)** = stitch(es) · **St st** = stockinette stitch · **tbl** = through the back loop · **tog** = together · **wyib** = with yarn in back of work · **wyif** = with yarn in front of work · **WS** = wrong side · **yo(s)** = yarn over(s)

Publisher's Info

Publisher: Lana Grossa GmbH, Gaimersheim, www.lana-grossa.com

Photographer: Susan Buth