

LANA GROSSA



© Lana Grossa GmbH

Design 13 – Linea Pura 16

**PULLOVER
NASTRINO**

PULLOVER · NASTRINO

Design 13 – Linea Pura 16



Size 36 – 40 (42 – 46)

Instructions are given for smaller size. Figure in parenthesis refers to larger size. When only one figure is given, it applies to both sizes.

Materials: **350 (400) g** of Lana Grossa **Nastrino** (100% cotton; 190 m/50 g) in Dark Blue (**col 16**). Size 2.5 and 3.5 mm needles; size 2.5 mm circular needle, 60 cm long.

Selvage stitches: On every row: Sl first st kwise, k last st.

Rib patt: Work according to chart A. Numbers at left edge of chart indicate WS rows, number at right edge of chart indicates RS row. Chart begins with a WS row. Work to patt rep, work 3 sts between arrows for patt rep, work to end of chart. Work rows 1 – 3 once, the rep rows 2 and 3.

St st: K on RS, p on WS.

Drop st panels: Work according to chart B. Numbers at right edge of chart indicate RS rows, numbers at left edge of chart indicate WS rows. Position panels as given in instructions. Dbl arrow indicates center of chart. Work rows 1 – 6 once, then rep rows 5 and 6.

Full-fashion decrease: At beg of RS row, selvage st, patt over 3 sts, skp; at end of RS row, work to last 6 sts, k2tog, patt over 3 sts, selvage st.

Full-fashion increase: On RS row: M1R, 1 st in from each edge.

Gauge: 26 sts and 34 rows = 10 x 10 cm in St st on size 3.5 mm needles.

Back: With size 2.5 mm needles cast on 152 (164) sts. Beg and end with a WS row work in rib patt according to chart A for 19 rows and piece meas 4.5 cm from cast-on. Change to size 3.5 mm needles. Work rows 1 and 2 of chart B. Next row (RS): Selvage st, 3 sts in St st, work first 4 sts of row 3 chart B (= drop st panel), work in St st = 136 (148) sts to last 8 sts, work last 4 sts of row 3 chart B (= drop st panel), 3 sts in St st, selvage st = 150 (162) sts. Work in patt as set by last row and cont to foll chart B for a total of 88 rows and piece meas 26 cm from end of rib patt. Place marker in first and last st on last WS row to indicate beg of armholes. Cont in patt for 68 (72) rows and piece meas 20 (21) cm from armhole markers. Next 3 rows: Cont in patt as established, work rows 7 – 9 chart B over drop st panels = 152 (164) sts. Maintaining selvage sts, work row 10 of chart B. Maintaining selvage sts, work in St st until a total of 72 (76) rows = 21 (22) cm has been worked from armhole markers. Shape shoulders and neck: At each shoulder edge bind off 6 sts 1 time, then 7 (8) sts 6 times. At same time, when working 4th RS shoulder bind-off row, work neck as foll: Bind off center 44 sts. Working each side separately, bind off 3 sts at each neck edge 1 time, 2 sts 1 time, 1 st 1 time. No sts rem.

Front: Work same as back through row 2 chart B. Next row (RS): Selvage st, 3 sts in St st, work first 4 sts of row 3 chart B (= drop st panel), 61 (67) sts in St st, work row 3 chart B in its entirety (= 2 drop st panels), 61 (67) sts in St st, work last 4 sts of row 3 chart B (= drop st panel), 3 sts in St st, selvage st = 148 (160) sts. Work in patt as set by last row and cont to foll chart B until a total of 20 (24) rows = 6 (7) cm has been worked from armhole markers. Divide for V-neck: Next row (RS): Work in patt to 2 sts before center of front, k2tog and turn, leaving rem sts on hold for right front. Left front: Next row (WS): Selvage st, patt to end. Cont in patt and shape V-neck as foll: Working full-fashion dec, dec 1 st at end of next 28 RS rows and when same length as back to shoulder, shape shoulder at right edge same as for back. At same time, when working last 4 rows of shoulder shaping, work rows 7 – 10 of chart B. Right front: Return held sts to needle and with RS facing rejoin yarn. Next row (RS): Skp, patt to end. Complete as given for left front, reversing all shaping.

Sleeves: With size 2.5 mm needles cast on 71 (74) sts. Beg and end with a WS row work in rib patt according to chart A for 19 rows and piece meas 4.5 cm from cast-on, decreasing 1 (0) st on last WS row = 70 (74) sts. Change to size 3.5 mm needles. Work rows 1 and 2 of chart B. Next row (RS): Selvage st, 27 (29) sts in St st, work row 3 chart B in its entirety (= 2 drop st panels), 27 (29) sts in St st, selvage st = 68 (72) sts. Work in patt as set by last row, cont to foll chart B and shape sleeve as foll: Working full-fashion inc, inc 1 st at each end of 9th row from end of rib patt, then every 8th row 9 times, then every 6th row 8 times = 104 (108) sts. Cont in patt until 142 rows = 41.5 cm have been worked from end of rib patt, ending with a WS row. Shape sleeve cap: Bind off 6 sts at beg of next 14 rows and at same time, when working last 4 rows of cap shaping, work rows 7 – 10 of chart B. Bind off rem 34 (38) sts.

Finishing: Pin pieces to measurements and block. Sew shoulder seams. Neckband: With size 2.5 mm circular needle, pick up and k 159 sts evenly around neck edge. Place beg of rnd marker and join for working in rnds. With st at bottom V as a knit st, work in rib patt and work dbl dec at center V on every alt rnd as foll: Work to 1 st before center V st, sl 2 kwise, k1, pass slipped sts over knitted st. When 8 rnds have been worked and neckband meas 2 cm from pick-up rnd bind off all sts in rib. Sew on sleeves between markers. Sew side and sleeve seams.

PULLOVER · NASTRINO

Design 13 – Linea Pura 16



Charts A and B

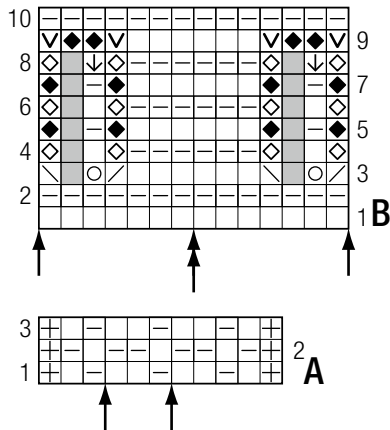
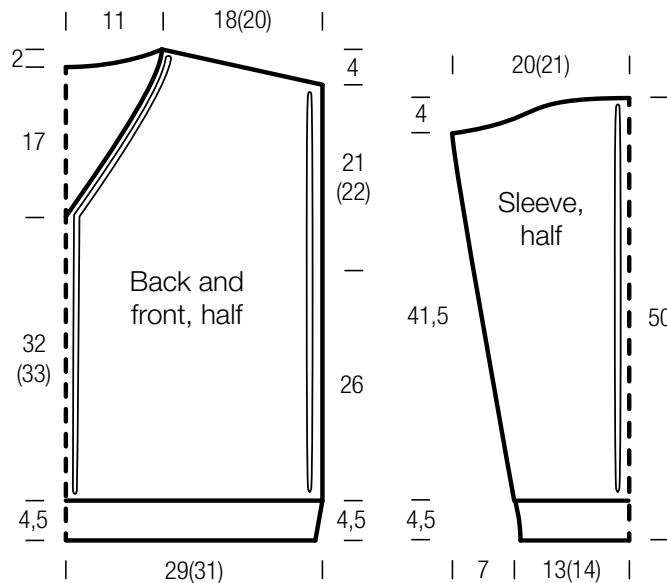


Chart key:

- ⊞ = selvage st
- = k1
- ▢ = p1
- = yo
- ▧ = k2tog
- ⊘ = skp: sl 1 kwise, k1, pass slipped st over knitted st
- ◆ = k1tbl
- ◇ = p1tbl
- = represents “no stitch” (included to keep st count correct)
- ⏚ = drop st and unravel down to yo
- ∇ = M1R



Gauge Swatch

Before you begin ...

...make a gauge swatch. Use the recommended needles, yarns and pattern stitch for your gauge swatch. It should measure approx. 12 cm x 12 cm. Cast-on and bind-off rows, as well as selvage stitches should not be included in the measurement. Pin your swatch and block it as you would the finished pieces of the garment. Count stitches and rows over 10 cm. If your gauge swatch is too small, switch to larger needles. If your gauge swatch is too big, switch to smaller needles.



Abbreviations

beg = begin(ning) · **ch** = chain · **cont** = continue · **dec** = decreas(e)(ing) · **inc** = increas(e)(ing) · **k** = knit · **kwise** = as if to knit
meas = measures · **M1L** = lift strand between sts from front to back and knit this strand through the back loop · **M1R** = lift strand between sts from the back and knit this strand through the front loop · **patt** = pattern · **pm** = place marker · **p** = purl
pwise = as if to purl · **rem** = remain(ing) · **rep** = repeat(s) · **rev St st** = reverse stockinette stitch · **rnd(s)** = round(s) · **RS** = right side · **sc** = single crochet · **skp** = slip 1 stitch as if to knit, knit 1 stitch, pass slipped stitch over knitted stitch · **sk2p** = slip 1 stitch as if to knit, knit 2 together, pass slipped stitch over knitted stitch · **s2kp** = slip 2 stitches as if to knit, k 1 stitch, pass slipped stitches over knitted stitch · **sl** = slip · **st(s)** = stitch(es) · **St st** = stockinette stitch · **tbl** = through the back loop · **tog** = together · **wyib** = with yarn in back of work · **wyif** = with yarn in front of work · **WS** = wrong side · **yo(s)** = yarn over(s)

Publisher's Info

Publisher: Lana Grossa GmbH, Gaimersheim, www.lana-grossa.com

Photographer: Yannick Schuette