



www.lanagrossa.com



JACKET · ALESSIA & PER FORTUNA
Design 08 – About Berlin 09

JACKET · ALESSIA & PER FORTUNA

Design 08 – About Berlin 09



Size 36/38 (40/42)

Instructions are given for smaller size. Figure in parenthesis refers to larger size. When only one figure is given, it applies to both sizes.

Materials: **400 (450) g** of Lana Grossa **Alessia** (76% cotton, 20% recycled polyester, 4% polyester; 135 m/50 g) in Cream/Silver Grey (**col 1**) and **300 (350) g** of Lana Grossa **Per Fortuna** (74% organic cotton, 26% polyamide; 190 m/50 g) in White (**col 9**). Size 5 and 6 mm needles; size 6 mm circular needle, 80 cm long; two 20 mm buttons.

Note: Work with 1 strand of each yarn held tog throughout = 2 strands held tog.

Selvage stitches: On every row: Sl first st kwise, k last st.

Two-stitch selvage: On RS row, k1, sl 1 pwise wyib, work to last 2 sts, sl 1 pwise wyib, k1. On WS row, sl 1 pwise wyif, p1, work to last 2 sts, p1, sl 1 pwise wyif.

Rib patt: K2, p2.

Garner st: K every row.

St st: K on RS, p on WS.

Rev St st: P on RS, k on WS.

Full-fashion increase [collar]: On WS row: M1R, 3 sts in from each edge.

Gauges: With size 6 mm needles and 2 strands held tog: 17 sts and 29 rows = 10 x 10 cm in garter st; 17 sts and 22 rows = 10 x 10 cm in St st.

Back: With size with size 6 mm needles and 2 strands held tog cast on 70 (76) sts. Beg with a WS row and working first and last st as selvage sts, work in garter st and shape sides as foll: Inc 1 st at each end of 12th row from cast-on, then every 6th row 8 times = 88 (94) sts. Work even until piece meas 23 (25) cm from cast-on, ending with a WS row. Shape armholes: Bind off 1 st at beg of next 6 rows = 82 (88) sts. Work even until armhole meas 18 (19) cm, ending with a WS row. Shape shoulders and neck: At each shoulder edge bind off 5 sts 1 time, then 4 sts 4 times, 6 sts 1 time (then 5 sts 5 times). At same time, on 4th RS shoulder bind-off row, work neck as foll: Bind off center 28 sts. Working each side separately, work to end of shoulder shaping. No sts rem.

Left front: With size 6 mm needles and 2 strands held tog cast on 39 (42) sts. Next row (WS): Two-stitch selvage, 1 st in rev St st, 35 (38) sts in garter st, selvage st. Cont in patt as set by last row, work incs for side shaping at right edge same as for back = 48 (51) sts. Work even until same length as back to armhole. Shape armhole at right edge same as for back = 45 (48) sts. Work even until piece meas 27 (30) cm from cast-on, ending with a WS row. Shape neck: Next row (RS): Work to last 3 sts and turn, leaving last 3 sts on holder. Next row (WS): Bind off 1 st, work to end. [Bind off 1 st at beg of every alt WS row 2 times, then every foll WS row 1 time] 4 times, then every alt WS row 2 times and when same length as back to shoulders, shape shoulders same as for back. No sts rem.

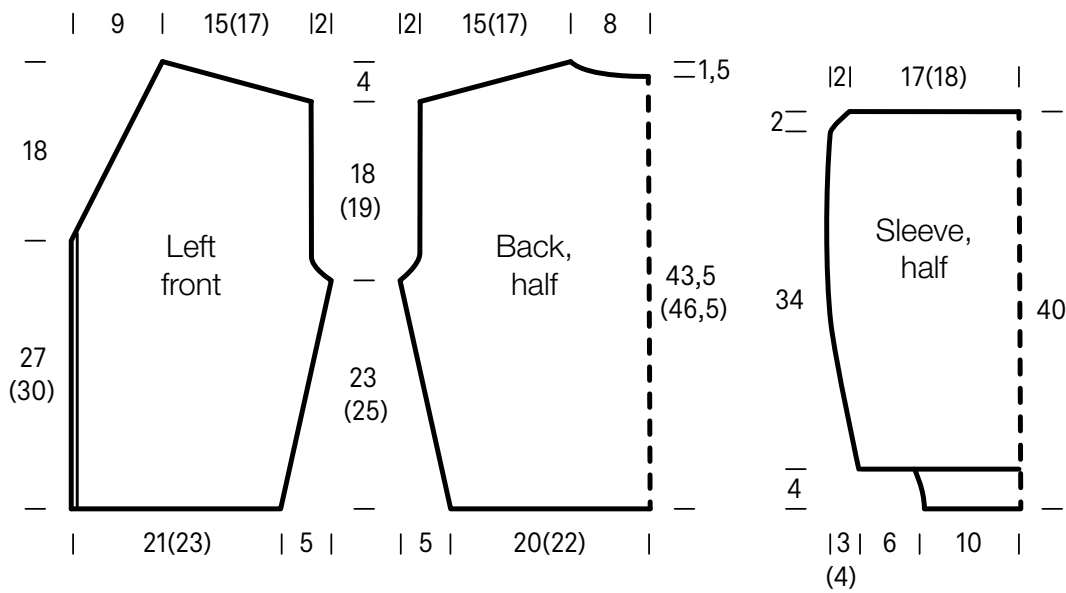
Right front: Work same as left front, reversing all shaping and patt placement and working 2 buttonholes at beg of RS rows as foll: Work first 3 sts, [k2tog, yo twice, k2tog tbl] for buttonhole, work to end. On foll WS row, k1f&b into dbl yo. Work first buttonhole on 46 (58)th row from cast-on, 2nd buttonhole spaced 24 rows apart.

Sleeves: With size 5 mm needles and 2 strands held tog cast on 38 sts. Next row (WS): Selvage st, p1, * k2, p2; rep from * to last 4 sts, k2, p1, selvage st. Cont in rib patt as set by last row until piece meas 4 cm from cast-on, increasing 20 sts evenly across last WS row = 58 sts. Change to size 6 mm needles. Maintaining selvage sts, work in garter st and shape sleeve as foll: Inc 1 st at each end of 9th row, then every 8th row 4 (6) times = 68 (72) sts. Work even until piece meas 34 cm from end of rib patt, ending with a WS row. Shape sleeve cap: Bind off 1 st at beg of next 6 rows. Bind off rem 62 (66) sts.

Finishing: Pin pieces to measurements and block. Sew shoulder seams. **Collar:** With WS facing, pick up and k 114 sts along left front, back and right front neck edge: 3 sts from left front neck holder, 37 sts along left front, 34 sts along back, 37 sts along right front neck edge, 3 sts from right neck holder. Working first and last 3 sts as established, work in rev St st and shape collar as foll: Working full-fashion inc, inc 1 st at each end of 6th row, then every alt row 4 times = 124 sts. Work increased sts in rev St st. Work even for 4 rows. Next WS (bind-off) row: K2tbl, sl sts back to left needle, k2tog tbl; * sl st back to left needle, k2tog tbl; rep from * until 1 st rem. Break yarn and fasten off last st. Sew in sleeves. Sew side and sleeve seams. Sew on buttons.

JACKET · ALESSIA & PER FORTUNA

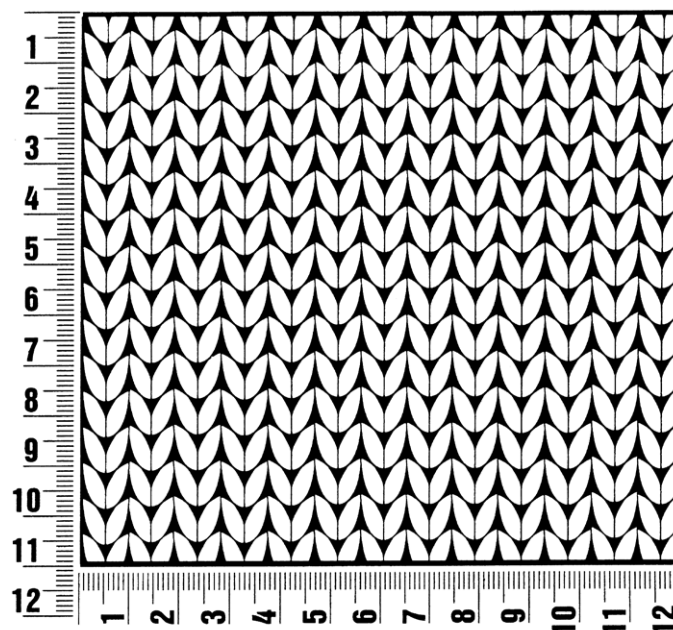
Design 08 – About Berlin 09



Gauge Swatch

Before you begin ...

...make a gauge swatch. Use the recommended needles, yarns and pattern stitch for your gauge swatch. It should measure approx. 12 cm x 12 cm. Cast-on and bind-off rows, as well as selvage stitches should not be included in the measurement. Pin your swatch and block it as you would the finished pieces of the garment. Count stitches and rows over 10 cm. If your gauge swatch is too small, switch to larger needles. If your gauge swatch is too big, switch to smaller needles.



Abbreviations

beg = begin(ning) · **ch** = chain · **cont** = continue · **dec** = decreas(e)(ing) · **inc** = increas(e)(ing) · **k** = knit · **kwise** = as if to knit
meas = measures · **M1L** = lift strand between sts from front to back and knit this strand through the back loop · **M1R** = lift strand between sts from the back and knit this strand through the front loop · **patt** = pattern · **pm** = place marker · **p** = purl
pwise = as if to purl · **rem** = remain(ing) · **rep** = repeat(s) · **rev St st** = reverse stockinette stitch · **rnd(s)** = round(s) · **RS** = right side · **sc** = single crochet · **skp** = slip 1 stitch as if to knit, knit 1 stitch, pass slipped stitch over knitted stitch · **sk2p** = slip 1 stitch as if to knit, knit 2 together, pass slipped stitch over knitted stitch · **s2kp** = slip 2 stitches as if to knit, k 1 stitch, pass slipped stitches over knitted stitch · **sl** = slip · **st(s)** = stitch(es) · **St st** = stockinette stitch · **tbl** = through the back loop · **tog** = together · **wyib** = with yarn in back of work · **wyif** = with yarn in front of work · **WS** = wrong side · **yo(s)** = yarn over(s)

Publisher's Info

Publisher: Lana Grossa GmbH, Gaimersheim, www.lanagrossa.com

Photographer: Yannick Schütte